



**FORD & PARTNERS**

— ESTATE AGENTS —



14 Rollings House Wrights Meadow Road, High Wycombe, Buckinghamshire, HP11 1NQ





14 Rollings House Wrights Meadow Road, High Wycombe, Buckinghamshire,  
HP11 1NQ

**Guide price £265,000**

A luxury penthouse apartment situated towards the East-Side of High Wycombe's Town Centre  
boasting over 700 sqft of accommodation.



## Description

When entering the property through the front door, you are welcomed into the spacious hallway with the open plan kitchen / dining / sitting room to your right. The kitchen is well equipped with an integrated fridge freezer, oven, gas hob, dishwasher, washer dryer and a large kitchen island. Back through the hallway you have the family bathroom, storage cupboard and bedroom. The bedroom is particularly spacious and benefits from built-in wardrobes.

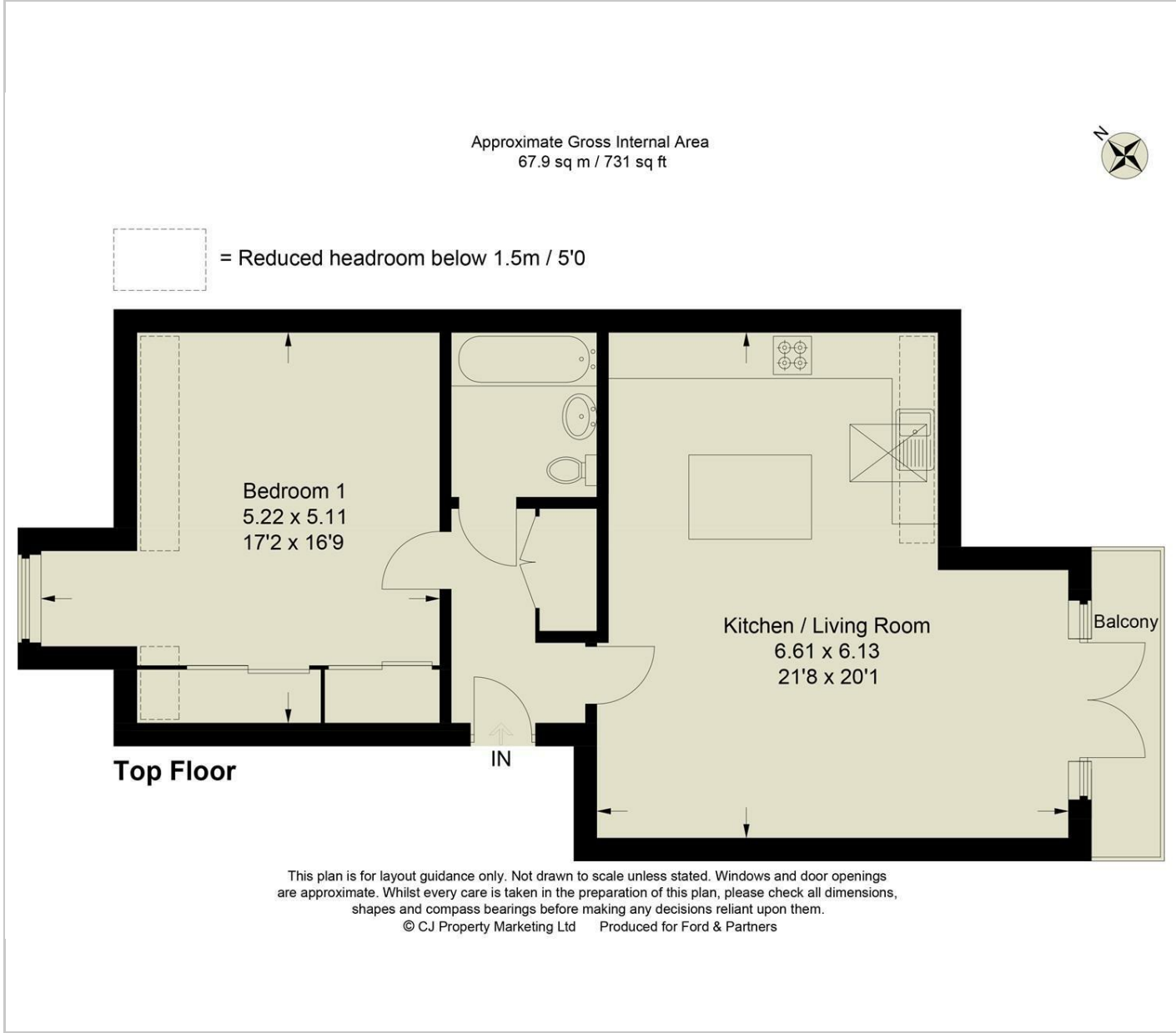
Further features include gas central heating, UPVC double glazing, allocated parking, loft storage and a south-facing balcony.

## Situation

Rollings House was constructed in 2007 by St. James Homes - a subsidiary of The Berkley Homes Group. Rollings House is situated on the east-side of High Wycombe's town centre - just a stones throw from High Wycombe's Retail Park. The Retail Park is a short walk away where you have a large M&S Food Hall, Pizza Hut, Wickes and other shops and amenities close by. Wycombe benefits from two motorway junctions of the M40 and the reliable Chiltern Railway service where you can be in London Marylebone Station in 27 minutes. Just a short stroll away is Kingsmead Park which is the home of the South Buckinghamshire Netball Association and the High Wycombe Rugby Club.



Floor Plans



Area Map



Energy Performance Graph

